

# Stealthbox®

## INSTALLATION GUIDE for the SB-N-TTNCRW/210W3v2 (04-Up Nissan Titan Crew Cab)



This Stealthbox is a product which requires professional installation skills and tools.

Please read this installation guide thoroughly before beginning the project. It will guide you step by step through the installation. Several of the steps in this process may require two people to accomplish.

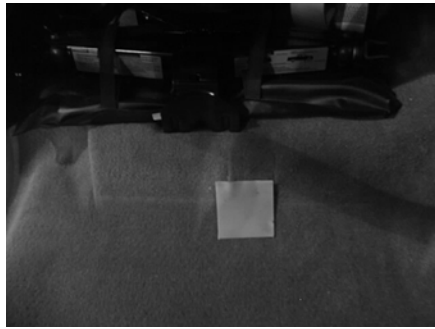
It is absolutely vital that the enclosure be properly mounted to the vehicle according to these instructions. Failure to mount the enclosure properly presents two problems: 1) The sub-bass performance will suffer due to the movement of the enclosure caused by the force exerted by the woofer(s) and 2) A loose enclosure presents a serious safety hazard in the event of a collision or sudden deceleration.

*Please enjoy your JL Audio Stealthbox responsibly.*

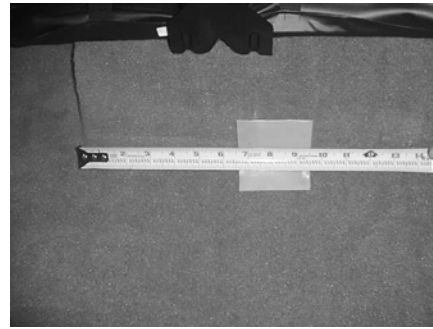
**JL AUDIO®**  
*Ahead of the Curve™*

[www.jlaudio.com](http://www.jlaudio.com)

**START  
HERE**



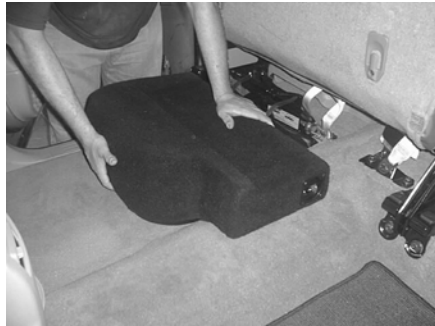
**STEP 1:** The wax square needs to be placed into the curvature of the floor bulk head.



**STEP 2:** With the passenger side rear seat lifted, out of the way. Measure 8" from the left floor corner to the middle of the placed wax square. Once placement is found, remove the paper backing and adhere to the carpet.



**STEP 3:** Place the supplied socket cup set screw into the enclosure, leaving 1/4" exposed.



**STEP 4:** Place the enclosure into position and press down firmly.

Make sure that the enclosure does not move around when placing the enclosure into position.

Once the wax square is marked, remove the enclosure out of vehicle.



### **STEP 5:      \*CAUTION\***

Before drilling, make sure that you are not going to be drilling into any gas lines, brake lines, transmission lines, electrical wiring, transfer case(4x4 vehicles) or anything else that might cause a reduction in your weekly pay. Always wear eye protection when drilling. With the use of a 1/2" drill bit and drill. Drill out the floor at the impression on the wax square.



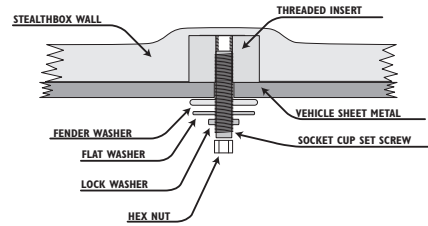
**STEP 6:** With the enclosure removed out of the vehicle, expose 1-1/2" of the socket cup set screw.

**Continued on Next Page →**

Cont. From Previous Page



**STEP 7:** Run and attach speaker wire from the amplifier location to the enclosure.



**STEP 8:** With the socket cup set screws protruding through the floor of the vehicle. Place the supplied fender washer, flat washer, lock washer and hex nut in this order. Secure tightly.



**CONGRATULATIONS! INSTALL COMPLETE.**

**Included Hardware:**

- 1) Wax Square
- 1) 3/8" x 2-1/4" Fender Washer
- 1) 3/8" Flat Washer
- 1) 3/8" Split Lock Washer
- 1) 3/8"-16 Hex Nut
- 1) 3/8"-16 x 2-1/4" Socket Cup Screw

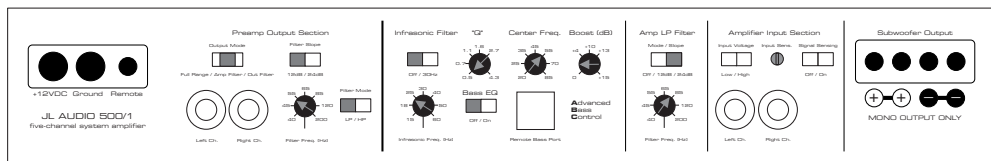
**Difficulty Of Installation:**



**Specifications:**

- Enclosure Type:** Sealed
- Driver Type:** 2) 10W3v2-D4
- Nominal Impedance:** 4Ω
- Cont. Power Handling:** 600Watts

JL Audio recommends using a high quality amplifier such as the JL Audio 500/1. The diagram below shows the recommended crossover, infrasonic filter and equalizer settings for the 500/1 when being used to power your Stealthbox®.



The JL Audio 500/1 is a very versatile audio component. Please consult the owner's manual for detailed information about installing and tuning this amplifier.

**Mid/High Frequency Driver Information:**

**Dash Location Driver Size:**  
2.5"

**Applicable JL Audio Products:**  
TR050-CT, VR075-CT, XR100-CT  
\*mounting plate is needed



**Front Location Driver Size:**  
6" x 9"

**Applicable JL Audio Products:**  
TR690-TXi, VR690-CXi  
\*mounting plate is needed



**Rear Location Driver Size:**  
6.5" separates

**Applicable JL Audio Products:**  
TR, VR, XR, ZR 650-CSi  
\*mounting plate is needed

