



Stealthbox®

INSTALLATION GUIDE
for the

SB-POL-SLINGSUBD/10W3v3-4

SB-POL-SLINGSUBD/10W3v3-2

SKU# 94637 (4 Ω) & 94638 (2 Ω)

2015-Up Polaris Slingshot

Enclosure Type: Sealed

Driver Type: 10W3v3

Nominal Impedance: 4 or 2 ohms

Continuous Power Handling: 500 watts (RMS method)

! IMPORTANT

If you choose to perform the installation yourself, it is absolutely vital that the Stealthbox® be properly mounted to the vehicle according to these instructions. Failure to mount the enclosure properly presents two problems:

- 1) The sub-bass performance will suffer due to the movement of the enclosure caused by the force exerted by the woofer(s).
- 2) A loose enclosure presents a serious safety hazard in the event of a collision or sudden deceleration.

INSTALLATION
DIFFICULTY:

1 OUT OF 5

ESTIMATED TIME:
1 HOUR

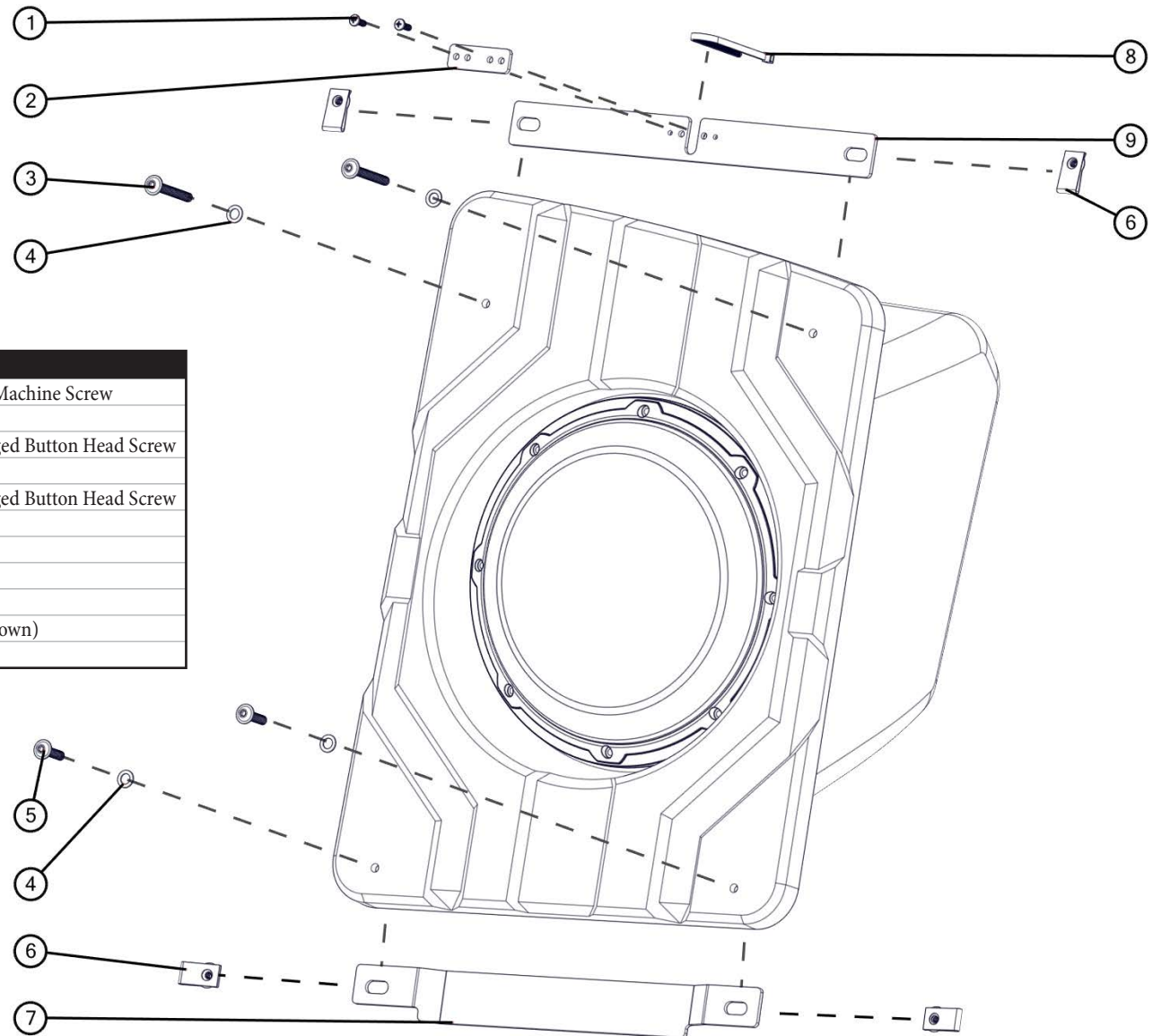


Thank you for choosing a JL Audio Stealthbox® for your automotive sound system. With proper installation, your new vehicle-specific enclosed subwoofer system will deliver years of listening pleasure.

We strongly recommend that you have your new Stealthbox® installed by your authorized JL Audio dealer. The installation professionals employed by your dealer have the necessary tools and experience to disassemble and reassemble your vehicle properly. If you prefer to perform your own installation, please read this installation guide completely before beginning the process.

INCLUDED HARDWARE

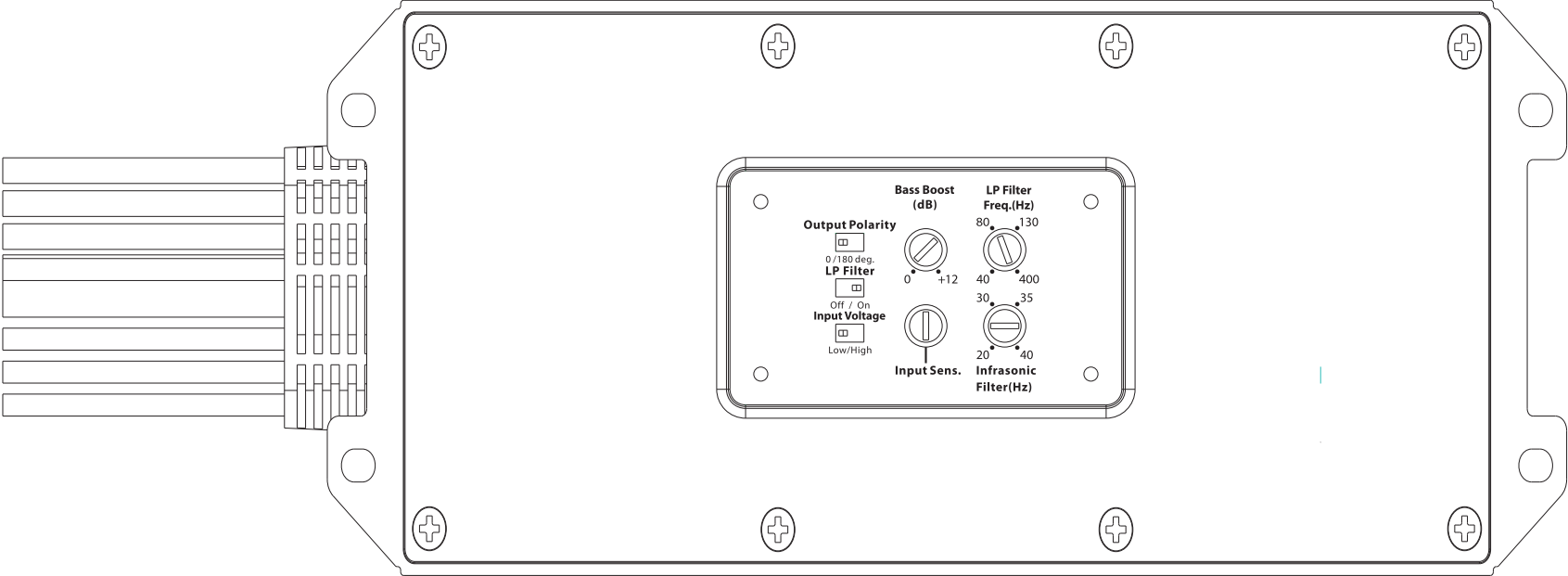
| BOM ID | Qty | SKU | Description |
|--------|-----|--------|---|
| 1 | 2 | 153814 | 8 - 32 x 1/2" Pan Head Phillips Machine Screw |
| 2 | 1 | 153850 | ABS Plate |
| 3 | 2 | 153855 | M6 - 1 x 50mm Hex Drive Flanged Button Head Screw |
| 4 | 4 | 153858 | Nylon Plastic Washer |
| 5 | 2 | 153853 | M6 - 1 x 25mm Hex Drive Flanged Button Head Screw |
| 6 | 4 | 153856 | M6 - 1 U-Nut |
| 7 | 1 | 153848 | Bottom Bracket |
| 8 | 1 | 150285 | Nylon Cable Tie |
| 9 | 1 | 153847 | Top Bracket |
| - | 1 | 153857 | 3/4" x 3/4" EPDM Foam (not shown) |
| - | 1 | 150249 | Foam Tape (not shown) |



Note: For optimum performance, JL Audio recommends applying the included Foam Strips (or sound damping material) to surrounding plastic panels to reduce unwanted vibrations.

POWER RECOMMENDATION

JL Audio recommends high quality amplifiers such as the JL Audio MX500/1. The diagram below shows the recommended crossover settings for the MX500/1. For a detailed description of the amplifier settings, consult the owner’s manual for the amplifier. If another amplifier is being used, please reference this illustration and use similar settings on that amplifier.



CONNECTIONS

Using quality power, signal, and speaker wire is essential in ensuring the performance of your Stealthbox®. JL Audio recommends using a 4 AWG power kit such as the XD-PCS4-1B for your Stealthbox® amplifier. Other kits are available should you be using more than one amplifier. Signal wire such as the JL Audio Premium Audio Interconnect Cables should be used to provide signal for both channels of the amplifier. JL Audio recommends using 12 AWG speaker wire for subwoofers such as our XC-BCS12-25.



STEP 1
Slide the seat forward.



STEP 2
Open the storage compartment, and remove the compartment door.



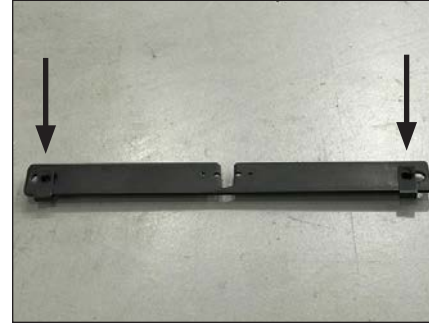
STEP 3
Route speaker cable into the storage compartment.



STEP 4
Slide an M6 - 1 U-Nut over each of the outer holes in the Bottom Bracket, as shown. Be sure the U-Nuts are oriented outward.



STEP 5
Position the Bottom Bracket assembly behind the hinge, under the storage compartment, as shown. The center, flat section of the Bottom Bracket should be placed against the rear plastic panel. Center the Bottom Bracket below the storage compartment opening.



STEP 6
Slide an M6 - 1 U-Nut over each of the outer holes in the Top Bracket, as shown. Be sure the U-Nuts are oriented downward.



STEP 7
Position the Top Bracket assembly behind the rear plastic panel, with its center cutout around the compartment latch, as shown. Position the ABS Plate between the Top Bracket and the compartment latch, aligning the holes in both parts.

Secure with a pair of 8 - 32 x 1/2" Pan Head Phillips Machine Screws, as shown.



STEP 8
From inside the storage compartment, pass the Nylon Cable Tie through one of the inner holes in the Top Bracket and ABS Plate, around the front of the compartment latch, and back through the opposite inner hole in the ABS Plate and Top Bracket, into the storage compartment, as shown.



STEP 9

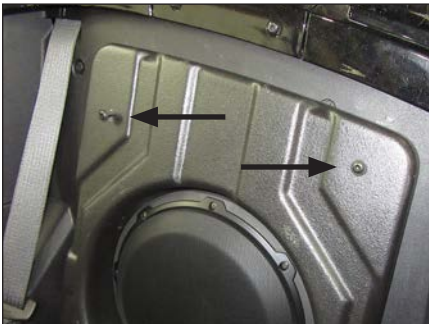
With the Top Bracket in the horizontal position, fully tighten the Nylon Cable Tie so that each of the M6- 1 U-Nuts on the Top Bracket is aligned with the factory holes in the rear plastic panel.

Remove the adhesive backing from the 3/4" x 3/4" EPDM Foam, and attach the foam to the rear panel, above the storage compartment opening, as shown.



STEP 10

Connect the speaker cable to the terminal cup on the back of the enclosure, and slide the Stealthbox® into the storage compartment.



STEP 11

Slide a 1/4" Nylon Plastic Washer over each of the two M6 - 1 x 50mm Hex Drive Flanged Button Head Screws. Pass an assembly through each of the holes in the top of the enclosure, and thread it into the M6 - 1 U-Nut.

Do not fully tighten at this time.



STEP 12

Slide a 1/4" Nylon Plastic Washer over each of the two M6 - 1 x 25mm Hex Drive Flanged Button Head Screws. Pass an assembly through each of the holes in the bottom of the enclosure, and thread it into the M6 - 1 U-Nut.

Do not fully tighten at this time.



STEP 13

Lift up on the enclosure, and fully tighten both M6 - 1 x 50mm Hex Drive Flanged Button Head Screws and both M6 - 1 x 25mm Hex Drive Flanged Button Head Screws.



STEP 14

Pictured is the Stealthbox fully installed.

Slide the seat back.

Note: For optimum performance, we recommend applying the included Foam Strips (or sound damping material) to surrounding plastic panels to reduce unwanted vibrations.

CONGRATULATIONS!

You have completed the installation for this model! Enjoy your new Stealthbox®!



MID/HIGH FREQUENCY DRIVER FITMENT

SB-POL-SLINGSPKRS/M770 speaker pods are also available for your vehicle. Each weatherproof pod is designed for a perfect fit and houses a premium JL Audio component system.

SB-POL-SLINGSPKR/M770
SKU# 94636



JL AUDIO | How we play.®    

(954) 443-1100

www.jlaudio.com

All specifications are subject to change without notice. "JL Audio" and the JL Audio logo, "Stealthbox" and the Stealthbox logo, and "How we play" are registered trademarks of JL Audio, Inc. "Ahead of the Curve" and its respective logo are trademarks of JL Audio, Inc.
Printed in USA • ©2017 JL Audio, Inc. • For more detailed information please visit us online at www.jlaudio.com.

JLA-SKU# 011482 • ver. 05.23.2017 • 10369 NORTH COMMERCE PARKWAY • MIRAMAR, FLORIDA • 33025 • USA